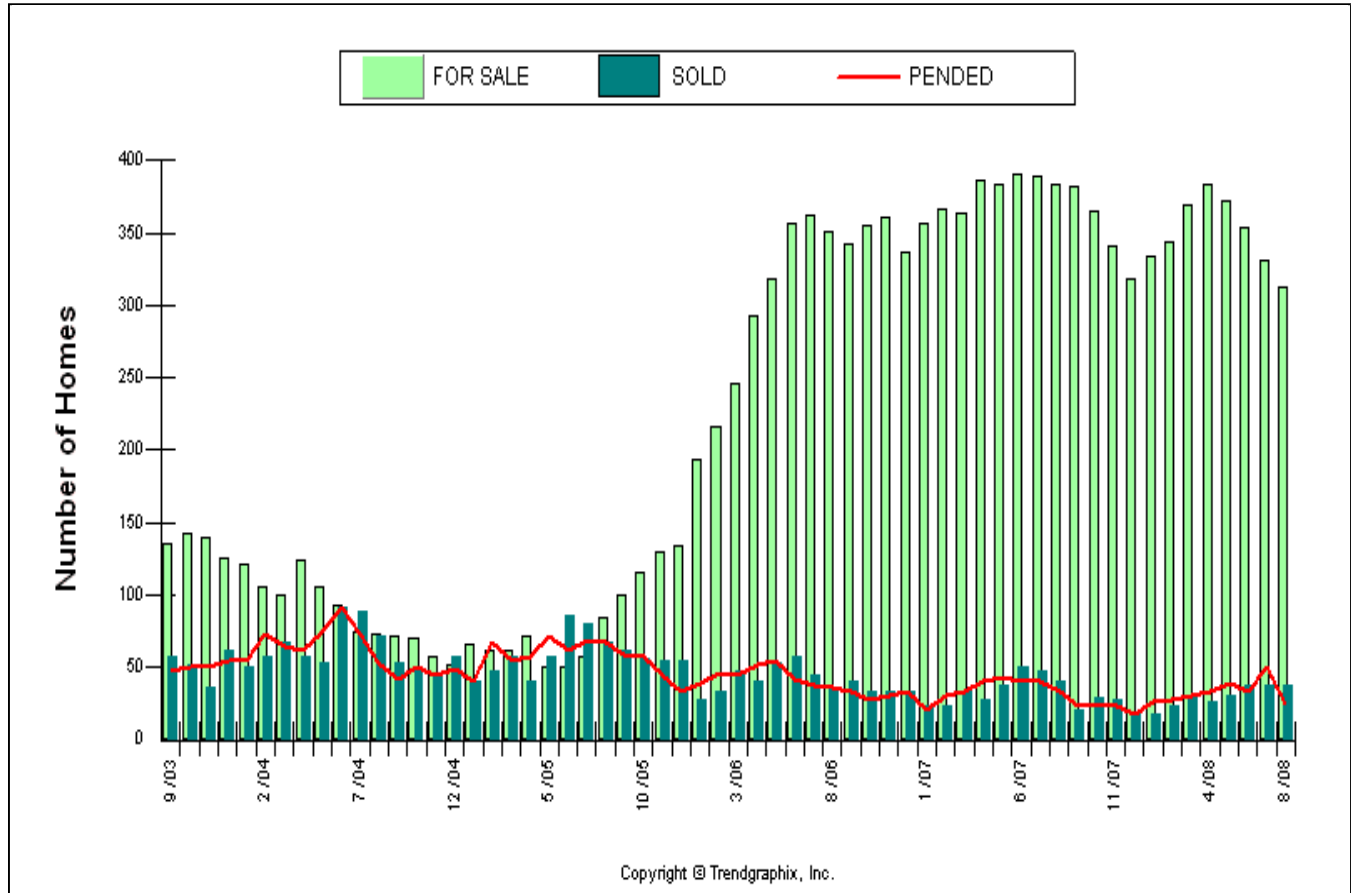


Facts and Trends™

Published Sep. 2008*

**Location : ZIP 33626****Number of Homes For Sale vs. Sold****Price Range: \$0 - No Limit****SQFT Range: 0 - No Limit****Single Family Home**

Prepared for you by: The Wood Team



Date	9/03	2/04	7/04	12/04	5/05	10/05	3/06	8/06	1/07	6/07	11/07	4/08	8/08
For Sale	135	105	75	52	50	116	246	351	357	390	341	384	313
Sold	57	58	88	57	57	56	47	35	24	51	27	26	38
Pended	48	73	73	49	72	57	44	36	21	41	23	34	25
Mon of Inv. on Sold	2.4	1.8	0.9	0.9	0.9	2.1	5.2	10	14.9	7.6	12.6	14.8	8.2
Mon of Inv. on Pended	2.8	1.4	1	1.1	0.7	2	5.6	9.8	17	9.5	14.8	11.3	12.5
Avg. Act Price	310	340	373	419	488	594	537	509	531	505	495	452	438
Avg. Sld Price	279	279	339	361	369	431	489	454	427	427	467	356	353
Avg. Sq. Ft. Price	120.11	120.3	138.54	146.16	157.18	187.04	193.93	180.51	175.51	172.49	173.79	151.63	142.41
Sold/List Diff. %	98	98	98	100	99	99	97	97	97	95	94	94	94
Days on Market	38	56	30	23	21	17	43	61	61	88	106	120	90
Sold/Orig LP Diff. %	98	98	99	101	99	98	98	93	92	91	89	87	88
Avg CDOM	0	0	0	0	0	0	0	0	0	0	0	0	0
Median Price	260	252	295	325	327	386	450	412	378	382	390	292	330

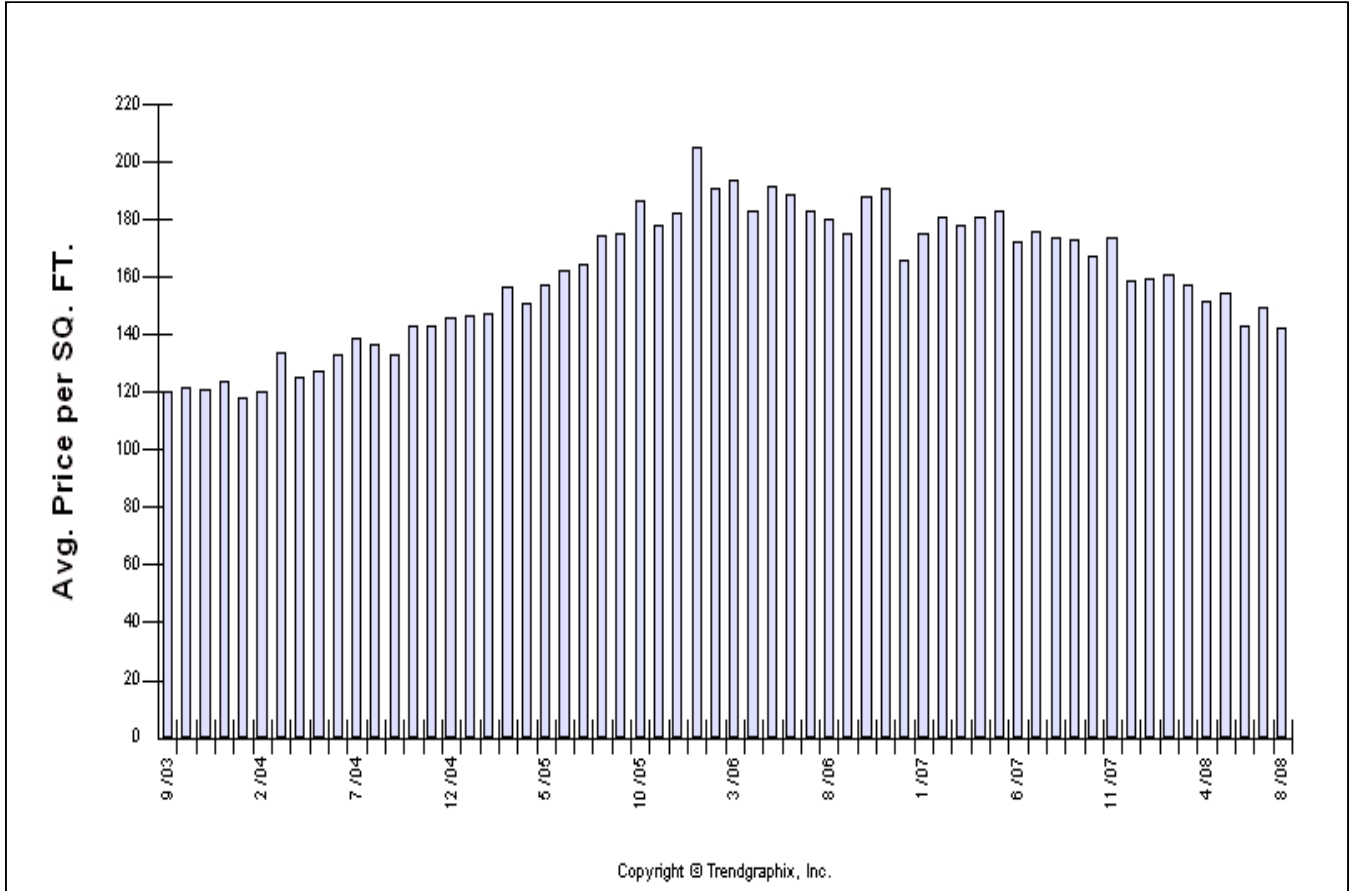
*All reports are published Sep. 2008, based on data available at the end of Aug. 2008.
 All reports presented are based on data supplied by the Tampa Florida Regional MLS, Mid-Florida Regional MLS, Southeast Florida, Regional MLS, Palm Beach Assc. of Realtors, Martin County Assc. of Realtors, Sunshine MLS, Fort Myers MLS, Marco Island Area Assc. of Realtors, Sanibel/Captiva Islands Assc. of Realtors or their MLSs. Neither the Associations nor their MLSs guarantee or are in anyway responsible for its accuracy. Data maintained by the Associations or their MLS

Facts and Trends™

Published Sep. 2008*

Location : ZIP 33626**Average Home Sold Price per SQFT****Price Range: \$0 - No Limit****SQFT Range: 0 - No Limit****Single Family Home**

Prepared for you by: The Wood Team



Date	9/03	2/04	7/04	12/04	5/05	10/05	3/06	8/06	1/07	6/07	11/07	4/08	8/08
For Sale	135	105	75	52	50	116	246	351	357	390	341	384	313
Sold	57	58	88	57	57	56	47	35	24	51	27	26	38
Pended	48	73	73	49	72	57	44	36	21	41	23	34	25
Mon of Inv. on Sold	2.4	1.8	0.9	0.9	0.9	2.1	5.2	10	14.9	7.6	12.6	14.8	8.2
Mon of Inv. on Pended	2.8	1.4	1	1.1	0.7	2	5.6	9.8	17	9.5	14.8	11.3	12.5
Avg. Act Price	310	340	373	419	488	594	537	509	531	505	495	452	438
Avg. Sld Price	279	279	339	361	369	431	489	454	427	427	467	356	353
Avg. Sq. Ft. Price	120.11	120.3	138.54	146.16	157.18	187.04	193.93	180.51	175.51	172.49	173.79	151.63	142.41
Sold/List Diff. %	98	98	98	100	99	99	97	97	97	95	94	94	94
Days on Market	38	56	30	23	21	17	43	61	61	88	106	120	90
Sold/Orig LP Diff. %	98	98	99	101	99	98	98	93	92	91	89	87	88
Avg CDOM	0	0	0	0	0	0	0	0	0	0	0	0	0
Median Price	260	252	295	325	327	386	450	412	378	382	390	292	330

*All reports are published Sep. 2008, based on data available at the end of Aug. 2008.
 All reports presented are based on data supplied by the Tampa Florida Regional MLS, Mid-Florida Regional MLS, Southeast Florida, Regional MLS, Palm Beach Assc. of Realtors, Martin County Assc. of Realtors, Sunshine MLS, Fort Myers MLS, Marco Island Area Assc. of Realtors, Sanibel/Captiva Islands Assc. of Realtors or their MLSs. Neither the Associations nor their MLSs guarantee or are in anyway responsible for its accuracy. Data maintained by the Associations or their MLS

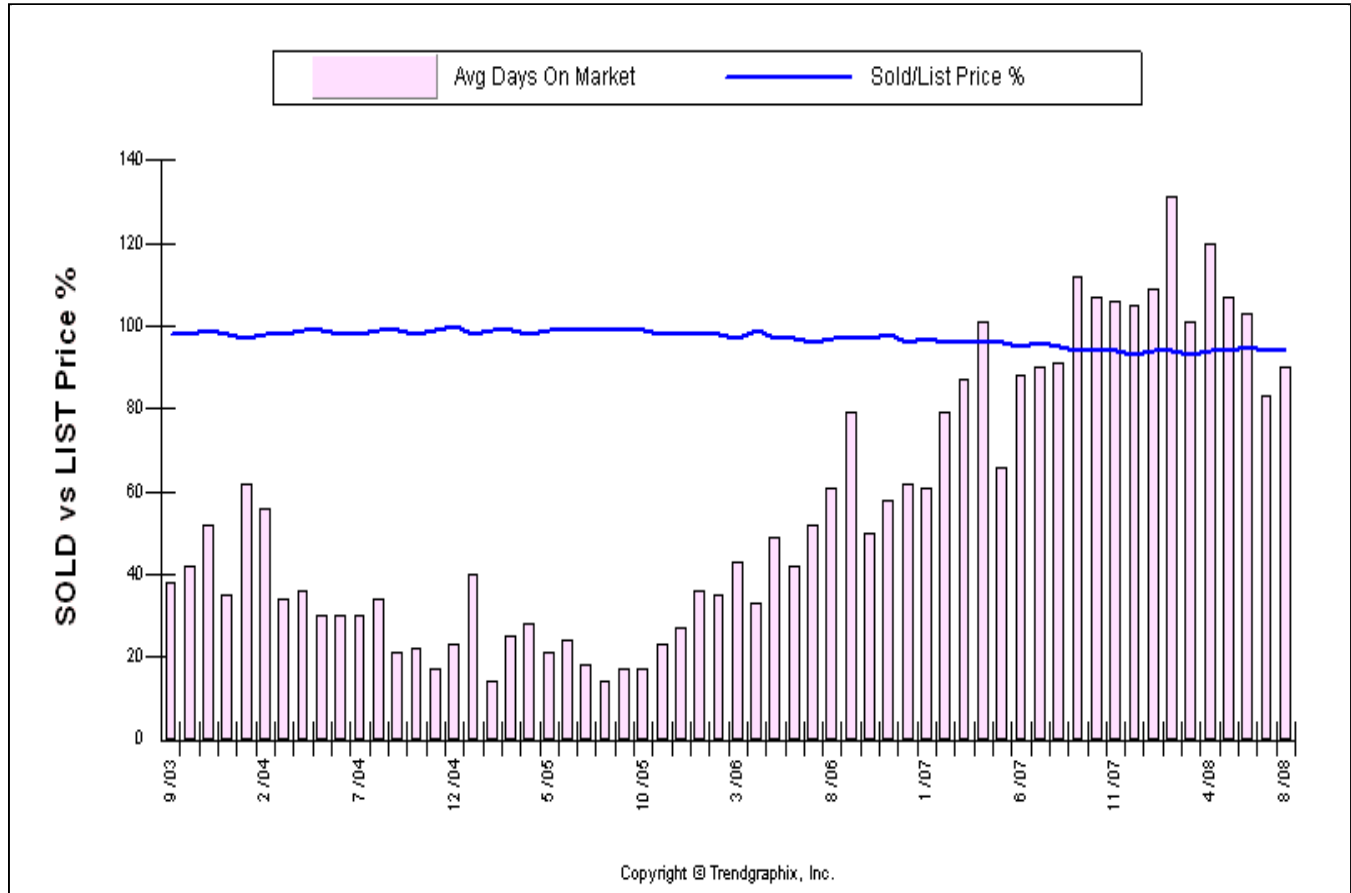
Facts and Trends™

Published Sep. 2008*

Location : ZIP 33626
Avg DOM & SP/LP %
Price Range: \$0 - No Limit
SQFT Range: 0 - No Limit
Single Family Home



Prepared for you by: The Wood Team



Date	9/03	2/04	7/04	12/04	5/05	10/05	3/06	8/06	1/07	6/07	11/07	4/08	8/08
For Sale	135	105	75	52	50	116	246	351	357	390	341	384	313
Sold	57	58	88	57	57	56	47	35	24	51	27	26	38
Pended	48	73	73	49	72	57	44	36	21	41	23	34	25
Mon of Inv. on Sold	2.4	1.8	0.9	0.9	0.9	2.1	5.2	10	14.9	7.6	12.6	14.8	8.2
Mon of Inv. on Pended	2.8	1.4	1	1.1	0.7	2	5.6	9.8	17	9.5	14.8	11.3	12.5
Avg. Act Price	310	340	373	419	488	594	537	509	531	505	495	452	438
Avg. Sld Price	279	279	339	361	369	431	489	454	427	427	467	356	353
Avg. Sq. Ft. Price	120.11	120.3	138.54	146.16	157.18	187.04	193.93	180.51	175.51	172.49	173.79	151.63	142.41
Sold/List Diff. %	98	98	98	100	99	99	97	97	97	95	94	94	94
Days on Market	38	56	30	23	21	17	43	61	61	88	106	120	90
Sold/Orig LP Diff. %	98	98	99	101	99	98	98	93	92	91	89	87	88
Avg CDOM	0	0	0	0	0	0	0	0	0	0	0	0	0
Median Price	260	252	295	325	327	386	450	412	378	382	390	292	330

*All reports are published Sep. 2008, based on data available at the end of Aug. 2008.
 All reports presented are based on data supplied by the Tampa Florida Regional MLS, Mid-Florida Regional MLS, Southeast Florida, Regional MLS, Palm Beach Assc. of Realtors, Martin County Assc. of Realtors, Sunshine MLS, Fort Myers MLS, Marco Island Area Assc. of Realtors, Sanibel/Captiva Islands Assc. of Realtors or their MLSs. Neither the Associations nor their MLSs guarantee or are in anyway responsible for its accuracy. Data maintained by the Associations or their MLS

Facts and Trends™

Published Sep. 2008*

Location : ZIP 33626
Avg Price For Sale & Sold
Price Range: \$0 - No Limit
SQFT Range: 0 - No Limit
Single Family Home



Prepared for you by: The Wood Team



Date	9/03	2/04	7/04	12/04	5/05	10/05	3/06	8/06	1/07	6/07	11/07	4/08	8/08
For Sale	135	105	75	52	50	116	246	351	357	390	341	384	313
Sold	57	58	88	57	57	56	47	35	24	51	27	26	38
Pended	48	73	73	49	72	57	44	36	21	41	23	34	25
Mon of Inv. on Sold	2.4	1.8	0.9	0.9	0.9	2.1	5.2	10	14.9	7.6	12.6	14.8	8.2
Mon of Inv. on Pended	2.8	1.4	1	1.1	0.7	2	5.6	9.8	17	9.5	14.8	11.3	12.5
Avg. Act Price	310	340	373	419	488	594	537	509	531	505	495	452	438
Avg. Sld Price	279	279	339	361	369	431	489	454	427	427	467	356	353
Avg. Sq. Ft. Price	120.11	120.3	138.54	146.16	157.18	187.04	193.93	180.51	175.51	172.49	173.79	151.63	142.41
Sold/List Diff. %	98	98	98	100	99	99	97	97	97	95	94	94	94
Days on Market	38	56	30	23	21	17	43	61	61	88	106	120	90
Sold/Orig LP Diff. %	98	98	99	101	99	98	98	93	92	91	89	87	88
Avg CDOM	0	0	0	0	0	0	0	0	0	0	0	0	0
Median Price	260	252	295	325	327	386	450	412	378	382	390	292	330

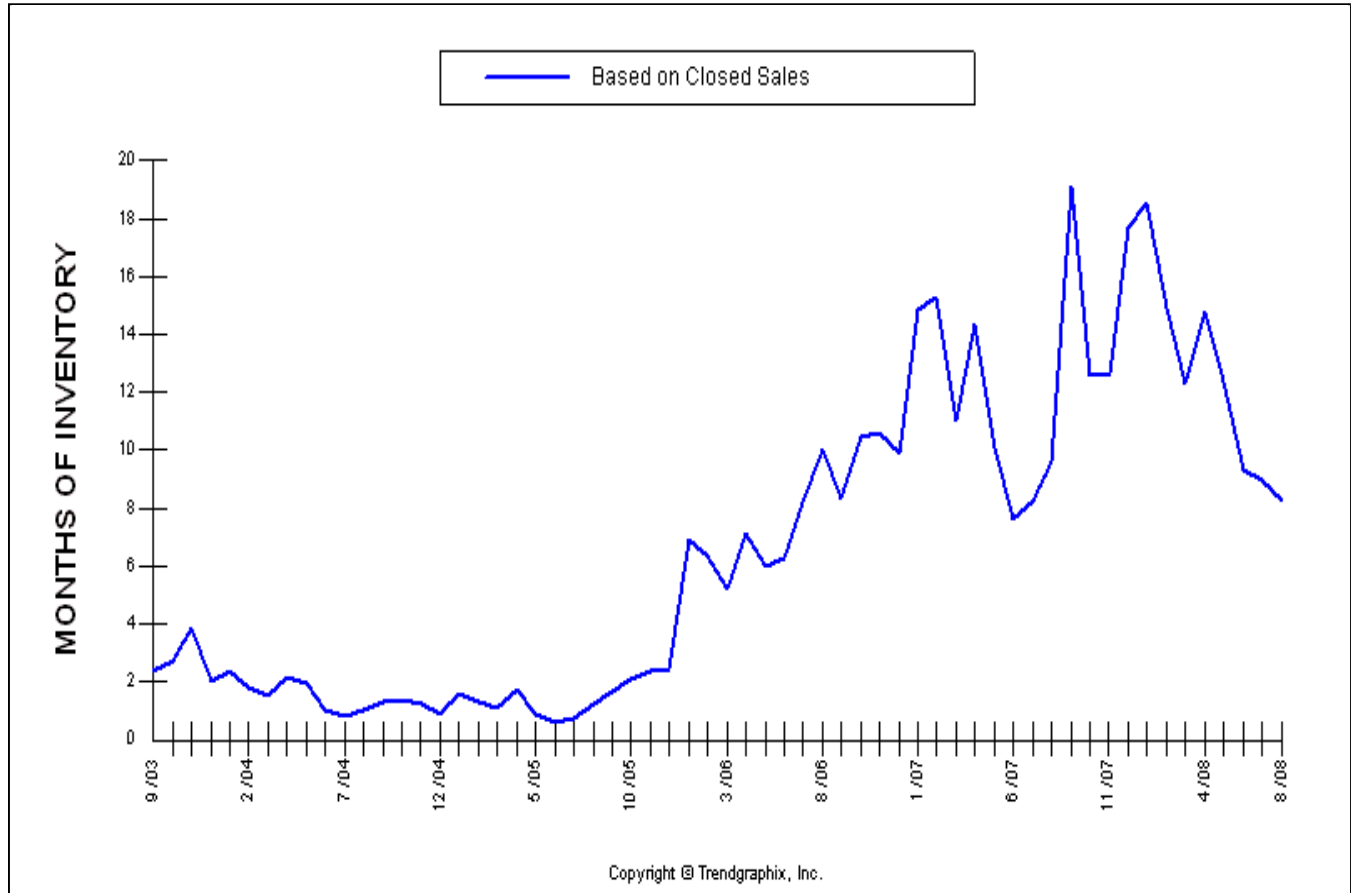
*All reports are published Sep. 2008, based on data available at the end of Aug. 2008.
 All reports presented are based on data supplied by the Tampa Florida Regional MLS, Mid-Florida Regional MLS, Southeast Florida, Regional MLS, Palm Beach Assoc. of Realtors, Martin County Assoc. of Realtors, Sunshine MLS, Fort Myers MLS, Marco Island Area Assoc. of Realtors, Sanibel/Captiva Islands Assoc. of Realtors or their MLSs. Neither the Associations nor their MLSs guarantee or are in anyway responsible for its accuracy. Data maintained by the Associations or their MLS

Facts and Trends™

Published Sep. 2008*

Location : ZIP 33626**Months of Inventory Based on Closed Sales****Price Range: \$0 - No Limit****SQFT Range: 0 - No Limit****Single Family Home**

Prepared for you by: The Wood Team



Date	9/03	2/04	7/04	12/04	5/05	10/05	3/06	8/06	1/07	6/07	11/07	4/08	8/08
For Sale	135	105	75	52	50	116	246	351	357	390	341	384	313
Sold	57	58	88	57	57	56	47	35	24	51	27	26	38
Pended	48	73	73	49	72	57	44	36	21	41	23	34	25
Mon of Inv. on Sold	2.4	1.8	0.9	0.9	0.9	2.1	5.2	10	14.9	7.6	12.6	14.8	8.2
Mon of Inv. on Pended	2.8	1.4	1	1.1	0.7	2	5.6	9.8	17	9.5	14.8	11.3	12.5
Avg. Act Price	310	340	373	419	488	594	537	509	531	505	495	452	438
Avg. Sld Price	279	279	339	361	369	431	489	454	427	427	467	356	353
Avg. Sq. Ft. Price	120.11	120.3	138.54	146.16	157.18	187.04	193.93	180.51	175.51	172.49	173.79	151.63	142.41
Sold/List Diff. %	98	98	98	100	99	99	97	97	97	95	94	94	94
Days on Market	38	56	30	23	21	17	43	61	61	88	106	120	90
Sold/Orig LP Diff. %	98	98	99	101	99	98	98	93	92	91	89	87	88
Avg CDOM	0	0	0	0	0	0	0	0	0	0	0	0	0
Median Price	260	252	295	325	327	386	450	412	378	382	390	292	330

*All reports are published Sep. 2008, based on data available at the end of Aug. 2008.
 All reports presented are based on data supplied by the Tampa Florida Regional MLS, Mid-Florida Regional MLS, Southeast Florida, Regional MLS, Palm Beach Assoc. of Realtors, Martin County Assoc. of Realtors, Sunshine MLS, Fort Myers MLS, Marco Island Area Assoc. of Realtors, Sanibel/Captiva Islands Assoc. of Realtors or their MLSs. Neither the Associations nor their MLSs guarantee or are in anyway responsible for its accuracy. Data maintained by the Associations or their MLS